



Sourland Mountain Region Open Space Analysis: Status for all Preservation Categories 2013-2023

Preserved Land

All land parcels which are permanently preserved, both publicly owned (state, county and municipal level) and privately owned (land conservation organizations and preservation easements on private property).

Preserved Land 2013: 22,113 acres
Preserved Land 2013-2023: 24,506 acres
Net Change: 2,402 acres

Developed Land

Land that cannot be further developed or preserved (urban, retail, industrial areas).

Developed Land 2013: 14,814 acres
Developed Land 2013-2023: 14,535 acres
Net Change: -279 acres

Not Preserved Land I

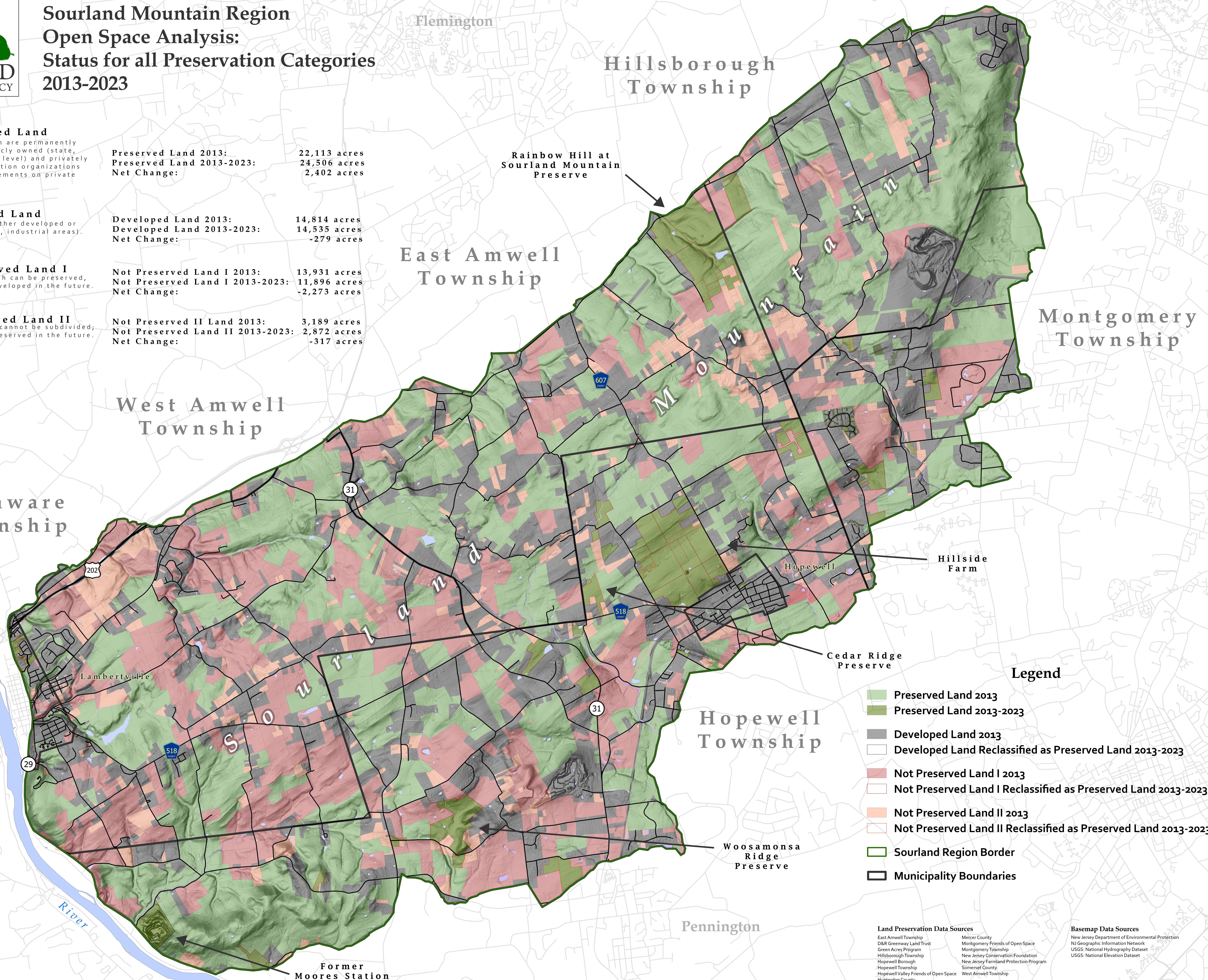
Unpreserved land which can be preserved, subdivided, and/or developed in the future.

Not Preserved Land I 2013: 13,931 acres
Not Preserved Land I 2013-2023: 11,896 acres
Net Change: -2,273 acres

Not Preserved Land II

Unpreserved land that cannot be subdivided, can be developed or preserved in the future.

Not Preserved II Land 2013: 3,189 acres
Not Preserved Land II 2013-2023: 2,872 acres
Net Change: -317 acres



Legend

- Preserved Land 2013
- Preserved Land 2013-2023
- Developed Land 2013
- Developed Land Reclassified as Preserved Land 2013-2023
- Not Preserved Land I 2013
- Not Preserved Land I Reclassified as Preserved Land 2013-2023
- Not Preserved Land II 2013
- Not Preserved Land II Reclassified as Preserved Land 2013-2023
- Sourland Region Border
- Municipality Boundaries

Land Preservation Data Sources

East Amwell Township
D&R Greenway Land Trust
Green Acres Program
Hillsborough Township
Hopewell Borough
Hopewell Township
Hopewell Valley Friends of Open Space
Hunterdon County
Mercer County
Montgomery Friends of Open Space
Montgomery Township
New Jersey Conservation Foundation
New Jersey Farmland Protection Program
Somerset County
West Amwell Township

Basemap Data Sources

New Jersey Department of Environmental Protection
NJ Geographic Information Network
USGS: National Hydrography Dataset
USGS: National Elevation Dataset

